

Operator name and signature: Rolf Ugilt Rolf Ugilt

Output:	11404 lm
Peak:	4287 cd
Lux@50cm:	17148 Lux
Power:	80,6 W
Power Factor / DF ϕ 1:	1,0
Standby power	0,97 W

Light efficacy:

142 Lumen/Watt

Light quality:

CRI: 81,6

Color temperature:

6226 K



According to regulation (EU) 2019/2015

Directionality:	Directional
Useful Lumen:	11194 lm
η TM - Efficacy	163 lm/W
Energy Class:	C

Product name:

NOVA 12K 100%

Item number:

03.5444

Date and time:

14-04-2021 09:17:34

Description:

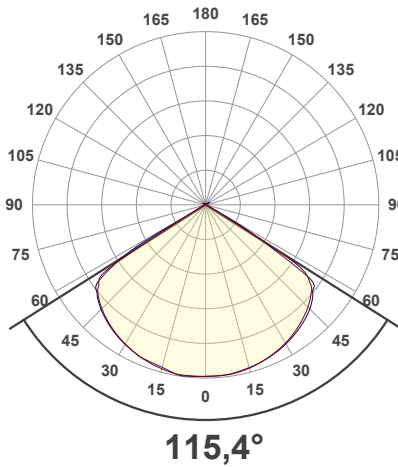
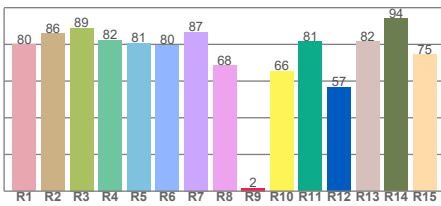
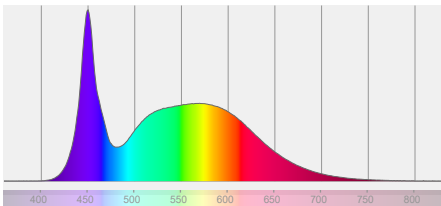
Standby Power [W]: 0,97

Sensor distance: 350cm

Warmup: <2% in 15 minutes

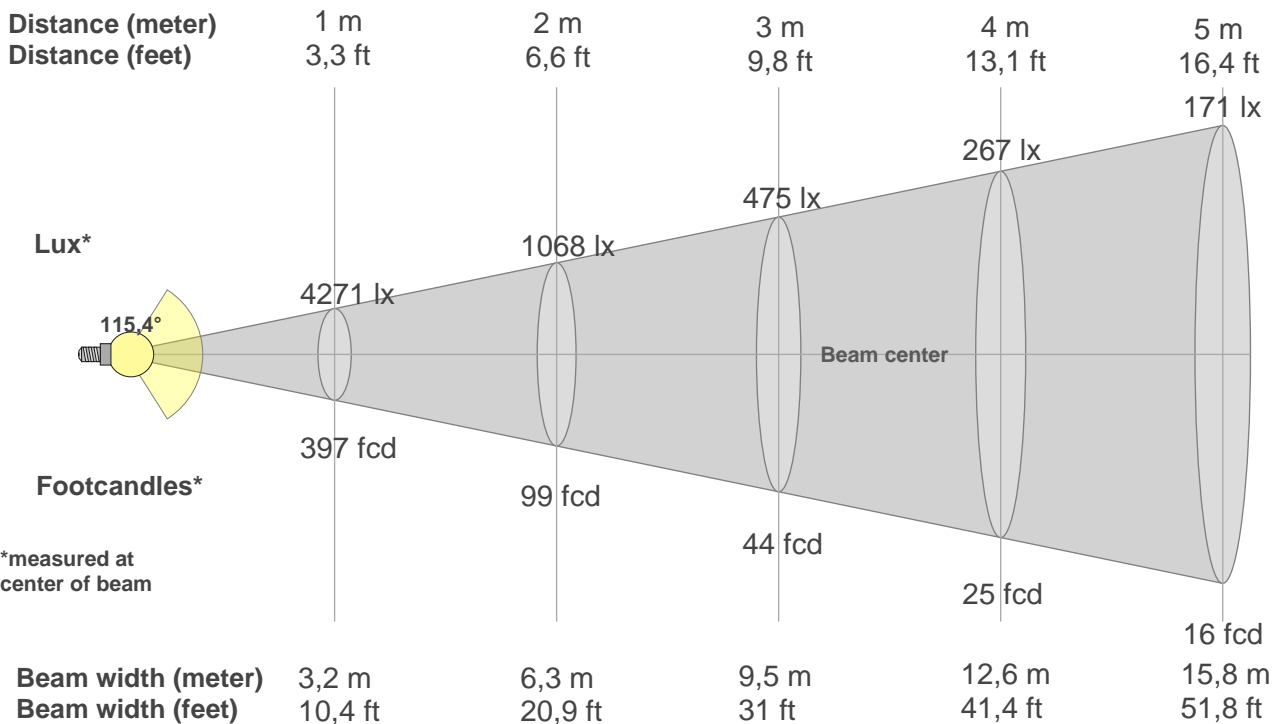
Power supply: 230Vac

Spectra



BEAM DETAILS

Beam distance: 130,7 meters



Beam intensities from 1-20m

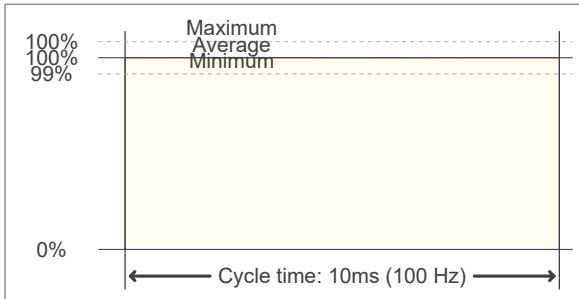
1m	2m	3m	4m	5m	6m	7m	8m	9m	10m	11m	12m	13m	14m	15m	16m	17m	18m	19m	20m
3,3ft	6,6ft	9,8ft	13,1ft	16,4ft	19,7ft	23ft	26,2ft	29,5ft	32,8ft	36,1ft	39,4ft	42,7ft	45,9ft	49,2ft	52,5ft	55,8ft	59,1ft	62,3ft	65,6ft
427lx	106lx	475lx	267lx	171lx	119lx	87lx	67lx	53lx	43lx	35lx	30lx	25lx	22lx	19lx	17lx	15lx	13lx	12lx	11lx
396,8fc	99,2fcd	44,1fcd	24,8fcd	15,9fcd	11fcd	8,1fcd	6,2fcd	4,9fcd	4fcd	3,3fcd	2,8fcd	2,3fcd	2fcd	1,8fcd	1,6fcd	1,4fcd	1,2fcd	1,1fcd	1fcd

FLICKER DETAILS

Flicker curve (complete sampled flicker signal)



Flicker frame (frame of one flicker period)



Flicker frequency:	100 Hz
Flicker index:	0
Flicker percentage:	0,09 %
SVM: (Visual flicker)	0
Pst LM:	0,03
SDCM	4,2
Rated Color Temperature	6000 K
Duv	0,0012
CIE Coordinates (x, y)	0,318, 0,332
CIE Coordinates (u, v)	0,200, 0,314

WARMUP DETAILS according to EN 13032-1

